



شركة منافع الاقتصادية للعقار  
Manaf'e Economic Co. for Real Estate

[info@manafeco.com](mailto:info@manafeco.com)



[www.manafeco.com](http://www.manafeco.com)

P. O. Box. 946 Jeddah 21421 Saudi Arabia - Unified No. 92002 9099 / Fax. +966 12 619 5533



# Contents

Page **03**

About Manafe

Page **04**

Our integrated solutions

Page **05**

Our strength

Page **06**

Our journey

Page **07**

Projects map in Jeddah

Page **08**

Success partners

Page **09**

Our alliances

Page **10**

Major tenants

Page **11**

Approvals

Page **12**

Project records

# About Manafe

A deep-rooted historical process of cumulative experiences



**24+**  
Years of experience

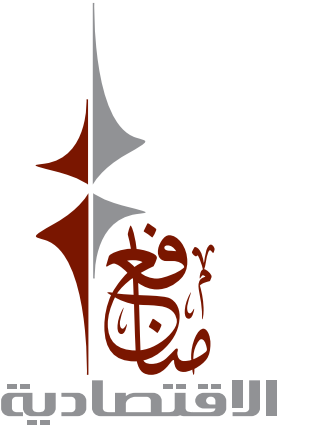
**4+**  
Branches

**90+**  
Employee

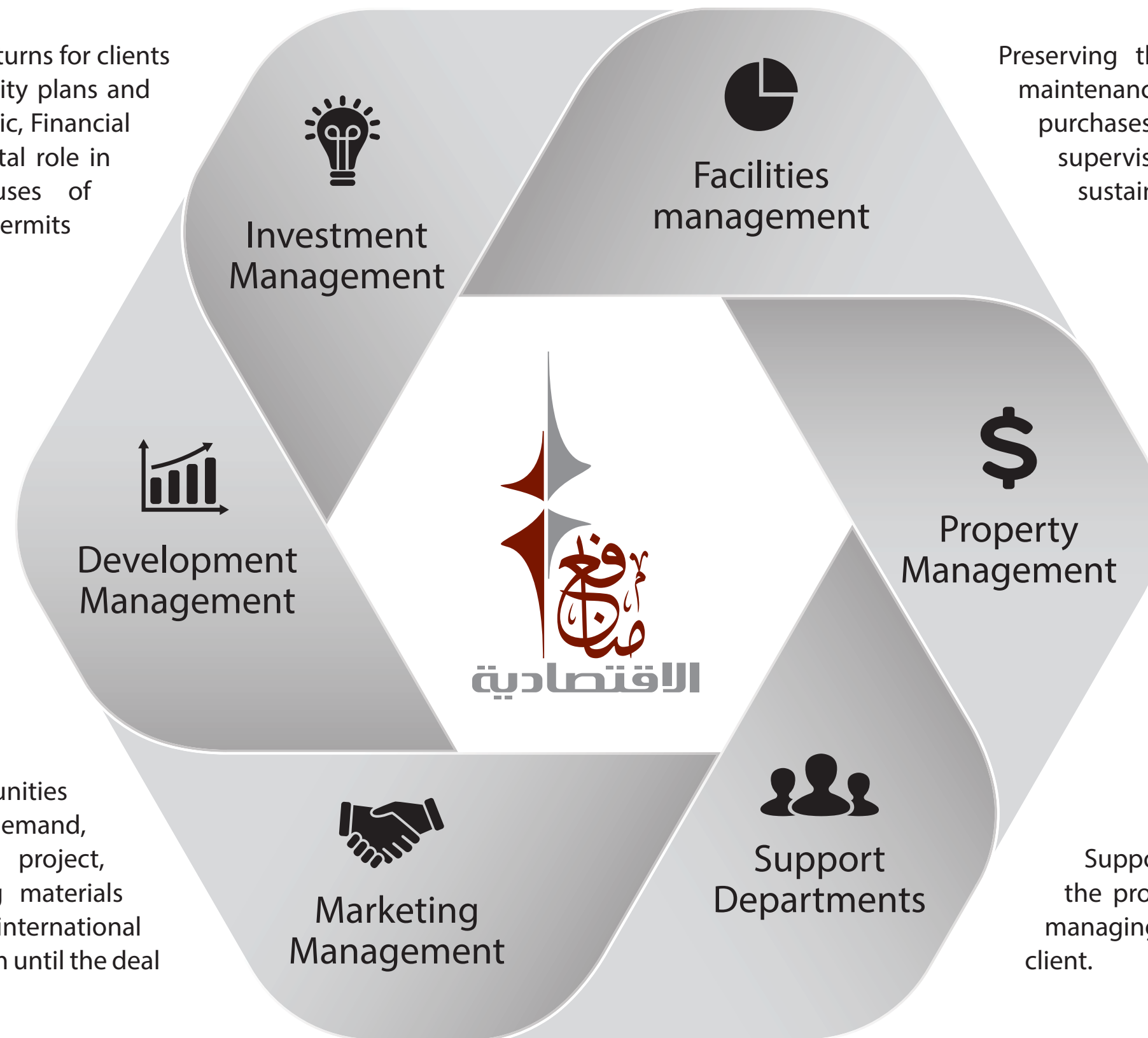
<b>2.8+</b> Billion SR, value of developed projects	<b>30+</b> of Developed projects	<b>5.6+</b> Million m <sup>2</sup> of developed land area
<b>370+</b> Properties under management	<b>200+</b> Served clients	<b>5,500+</b> Unit

# Our integrated solutions

Deep vision & great understanding in real estate investment management



**1** Ensuring achieving the best investment returns for clients by studying the site and developing quality plans and ideas through the Department of Economic, Financial and Legal Studies, in addition to its pivotal role in managing relations with expert houses of consultants and designers until building permits are issued for the project.



**4** Preserving the owners' assets by developing the necessary maintenance and operation plans, managing contracts and purchases with suppliers and service providers, and supervising their performance in order to ensure the sustainability of the real estate asset and raise its value.

**2** Controlling the time, quality and cost of the project, as it manages contractors, consultants and suppliers during the project construction period and finds solutions and proposals that improve the workflow on site while ensuring that costs are reduced to the maximum extent possible in order to ensure that the project is completed according to the budgets approved in the feasibility studies.

**5** Representing landlords in managing the relationship with tenants through the communication and collection department, and controlling operating costs efficiently to improve landlords' operating profit margins.

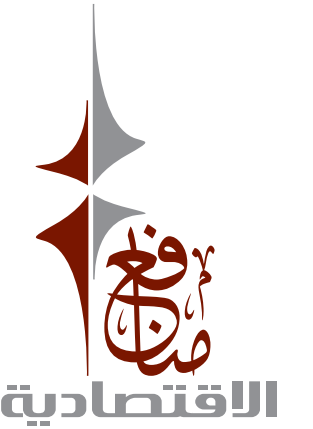
**3** Contributing to the real estate opportunities and the project idea in line with market demand, preparing marketing strategies for the project, managing the production of marketing materials appropriate to the target segment of international brands and companies, and attracting them until the deal is successfully concluded.

**6** Support and assistance to the client throughout the life of the project by managing financial and tax accounts, and managing governmental and legal affairs on behalf of the client.

**Integrated solutions covering all aspects of the real estate project life cycle from idea to sale**

# Our strength

Specializing in commercial real estate development



An integrated team specialized in investing, developing and operating real estate

Payment is made in stages linked to the completion and work provided to investors

Proven track record and diverse projects

Manage investor risks and check every step

Relationships with an elite group of consultants and contractors to ensure the best quality and price

Flexible and innovative investment structures and extensive experience in establishing and governing companies

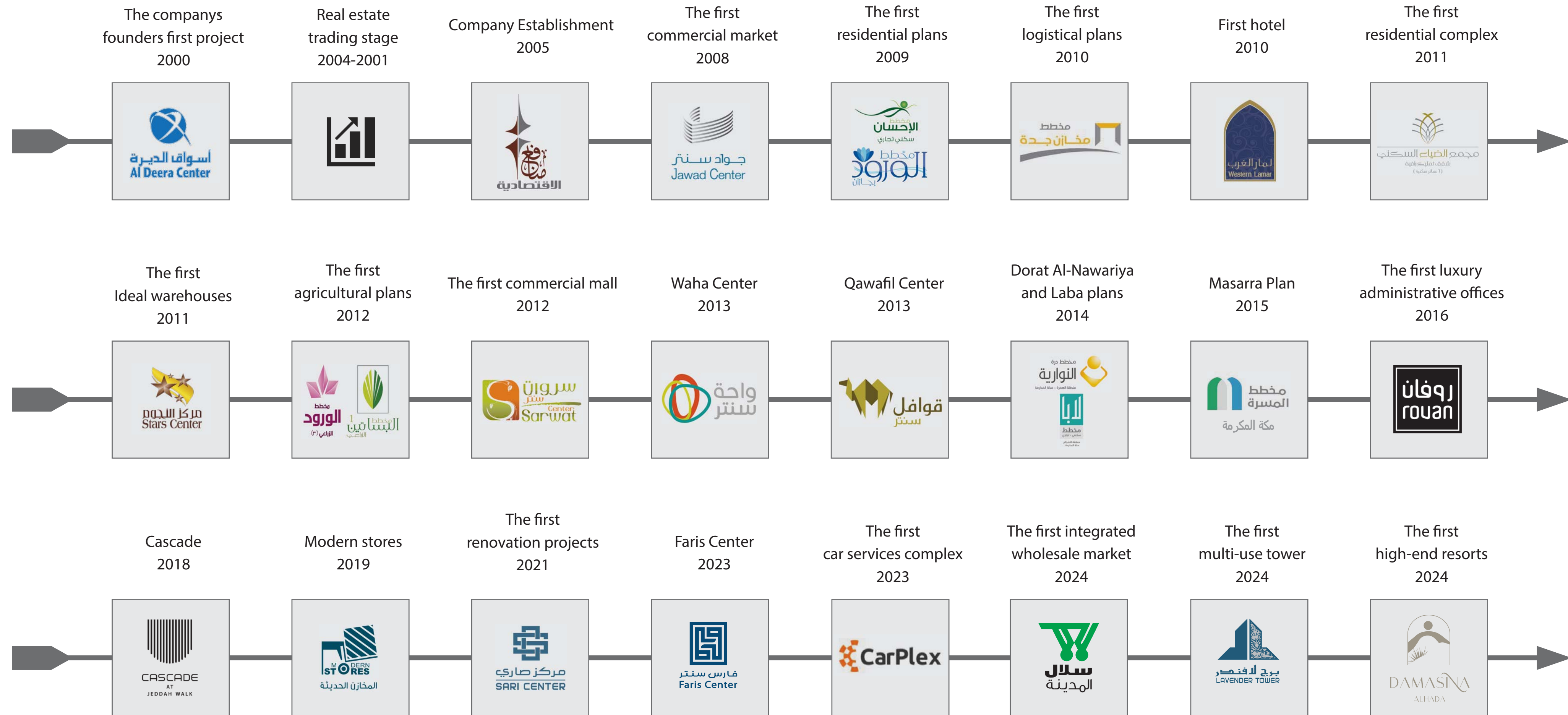
Experience in dealing with regulatory authorities

Strategic alliances with investors and financing entities

Familiarity with the latest regulations and laws related to the real estate sector

# Our journey

A proven track record and specialized property management services





# Projects map in Jeddah



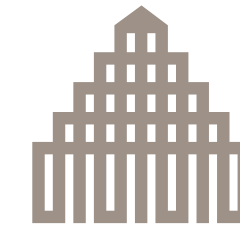
# Success partners



شركة ممشي جدة للتطوير والاستثمار العقاري  
Jeddah Walk Co. for Real Estate Development & Investment



شركة أصول العالمية للاستثمار والتطوير العقاري المحدودة  
ASSOL AL-ALAMIA Co. Ltd. for Real Estate Investment and Development



شركة التكافؤ للتطوير العقاري  
ALTKAFO Co. for Real Estate Development



شركة مصادر المتحدة للتطوير والاستثمار العقاري  
MASSADIR United Co. for Real Estate Development & Investment



شركة العمران المتميز المحدودة  
AL-OMRAN ALMUTMIZ Co. Ltd.



شركة صنوان الغربية للاستثمار والتطوير العقاري  
SINWAN AI Gharbia Co. for Investment and Real Estate Development



شركة تكامل الغربية للتطوير والاستثمار العقاري  
Takamul AI Gharbiyya Co. for Real Estate Investment and Development



شركة إيجاب الغربية للتطوير العقاري  
IGAP AI GHARBIA Co. For Real Estate Development



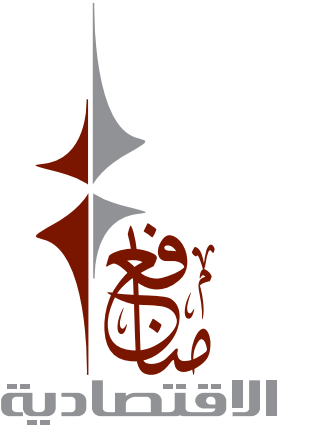
شركة أرجان المتخصصة للتطوير والاستثمار العقاري  
Arjan Specialized Co. for Real Estate Development and Investment



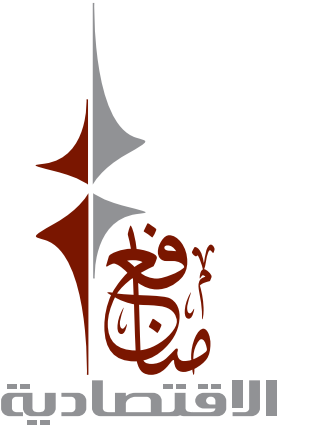
شركة مفاز المتحدة للتطوير العقاري  
Mafaz United Co. For Real Estate Development



# Our alliances



# Major tenants



ROKA

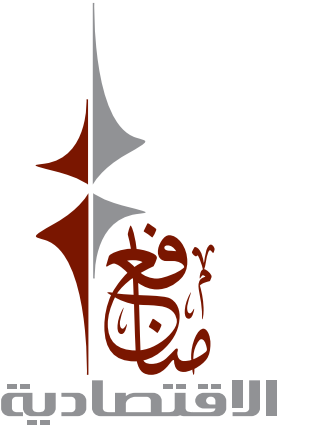


# Approvals



# Project records

During its career, Manafe developed more than 30 projects in various real estate sectors



## Administrative

-  Rovan Tower
-  Zan Square
-  Lavender

## Commercial

-  Cascade
-  CarPlex
-  Sari Center
-  Jawad Center
-  Sarawat Mall
-  Waha Center
-  Al-Deera Center
-  Faris Center

## Logistical

-  Modern Stores
-  Silal Al-Madinah
-  Qawafil Center
-  Stars Center

## Residential, Hotels and Resorts

-  Damascena Resort
-  Lamar West Hotel
-  Roya Hotel
-  Pearl Faith Hotel
-  Al-Dhya Complex
-  Morouj

## Land plans

-  Lapa plan
-  Huda Al-Basateen plan
-  Al-Basateen plan 1
-  Al-Basateen plan 2
-  Masarra chart
-  Al-Worood plan
-  Jizan Al-Worood plan
-  Al-Zohoor plan
-  Durrat Al-Nawariya plan
-  Al-Nakheel plan
-  Al-Ehsan plan
-  Jeddah warehouses plan

# Rovan Tower (Administrative)



## Location

Jeddah - Prince Saud Al Faisal Street

## Land area

3,265

## Built up area

26,000

## Commercial area

13,000

## Usage

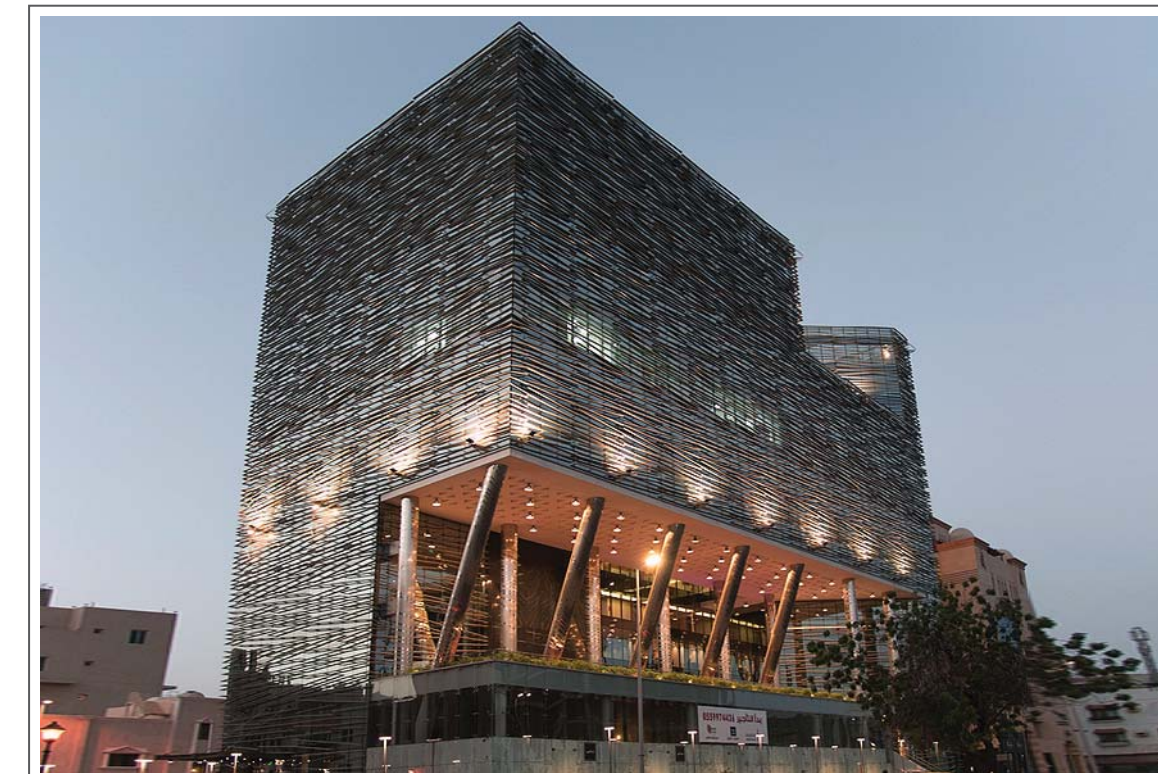
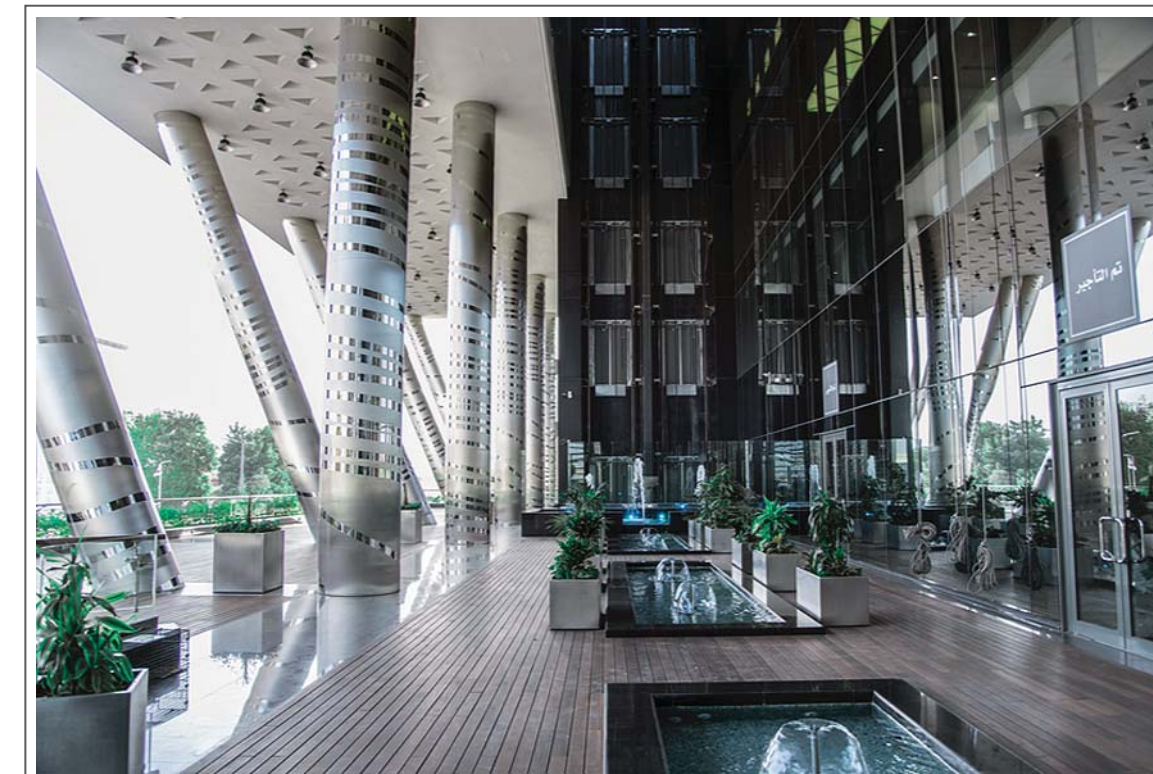
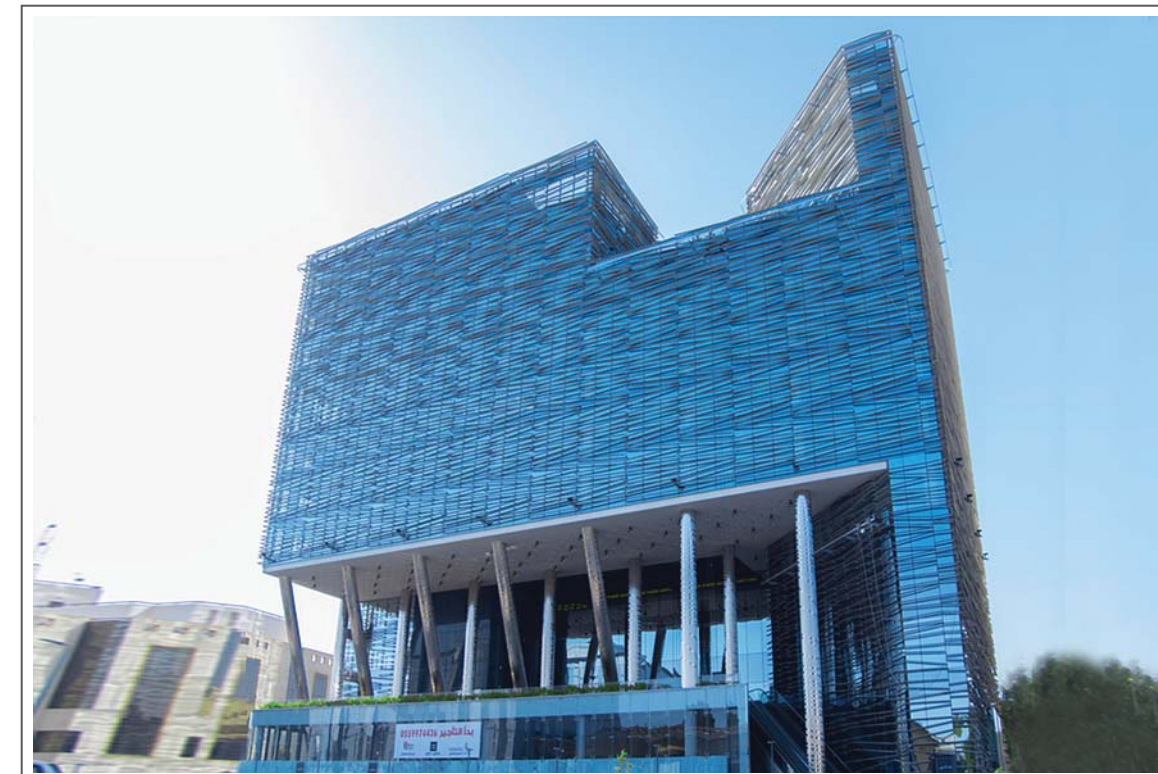
Shops - offices

## Year of completion

2018

## Status

Completed (sold in 2023)



Click on the link to go to the location on the map:

<https://goo.gl/maps/noCyPDinX6WvMPvz9>

# Zan Square (Administrative)



## Location

Jeddah - King Abdulaziz Road - Al-Zahraa

## Land area

18,816

## Built up area

38,906

## Commercial area

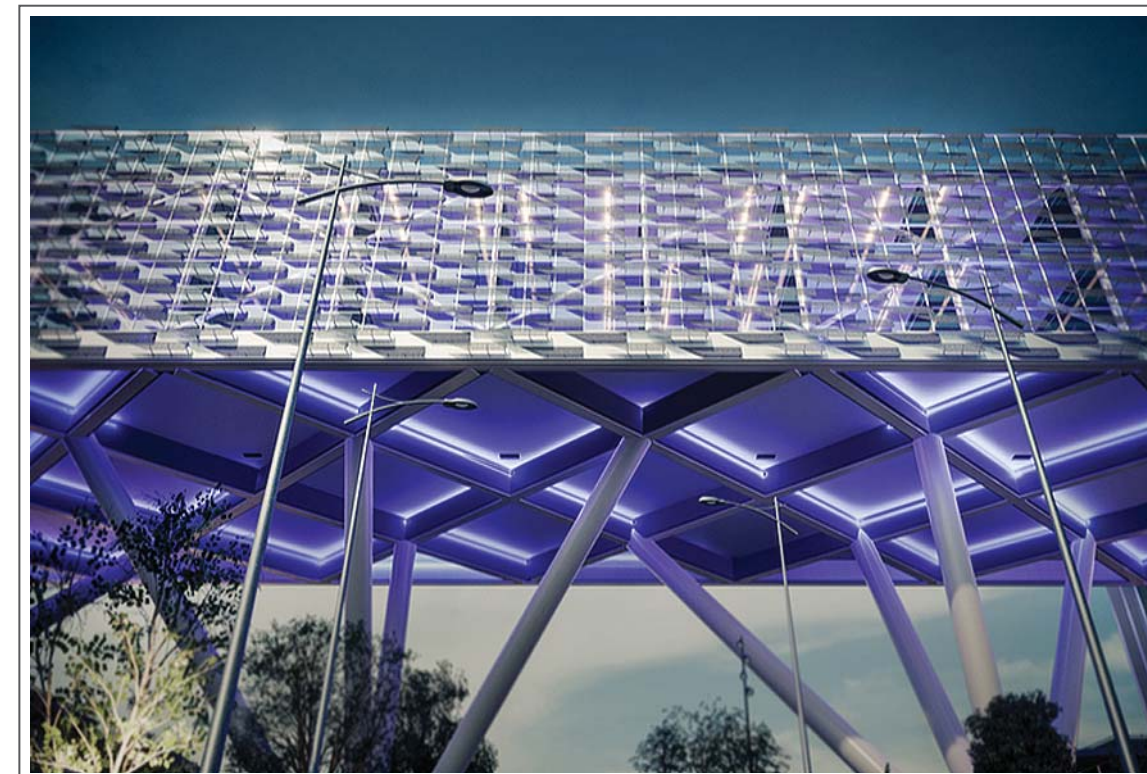
20,969

## Usage

Commercial - offices

## Status

Under construction



Click on the link to go to the location on the map:

<https://goo.gl/maps/ZKLgb4Uz9u8qYP4j9>

# Lavender Tower (Administrative)



## Location

Jeddah - Prince Saud Al Faisal Road  
Al Khalidiya

## Land area

6,047

## Built up area

31,472

## Commercial area

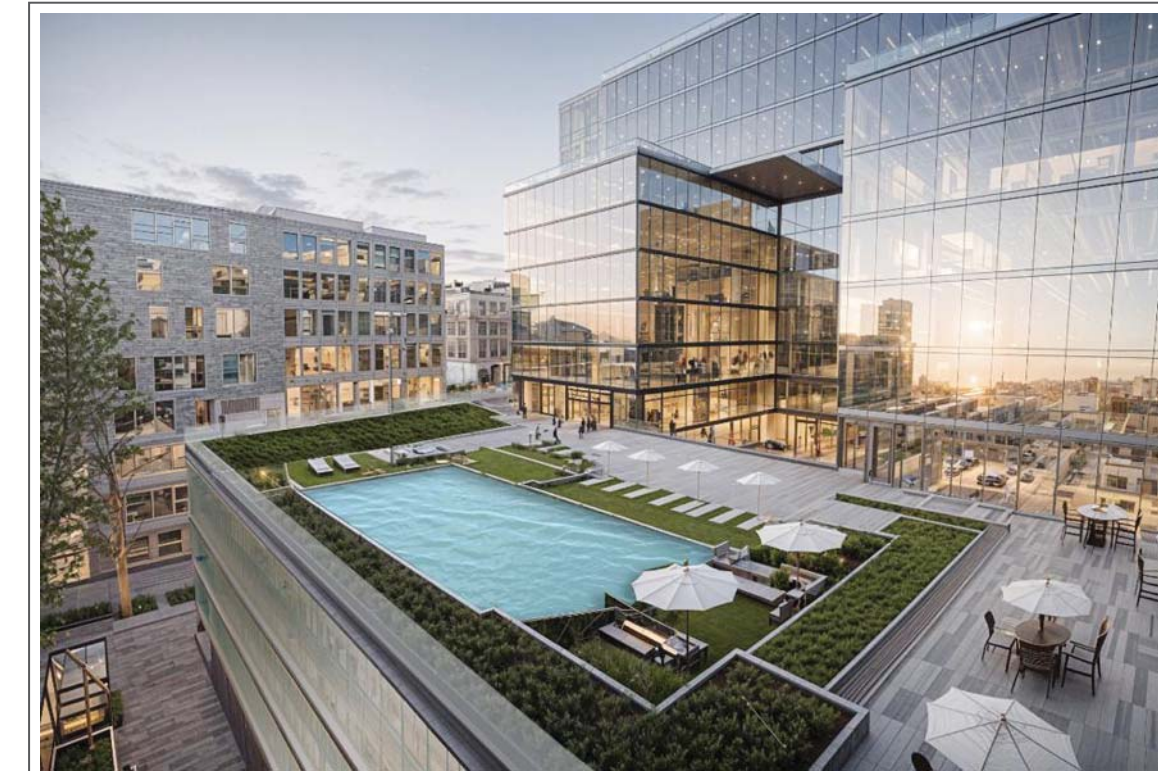
15,588

## Usage

Commercial - Offices

## Status

Under construction



Click on the link to go to the location on the map:

<https://maps.app.goo.gl/M8un131QwYhv8ips7>

# Cascade (Commercial)



## Location

Jeddah - Prince Muhammad bin Abdulaziz Street - Al Khalidiya

## Land area

7,750

## Built up area

19,268

## Commercial area

7,890

## Usage

Commercial -Luxury Restaurants

## Year of completion

2022

## Status

Completed (sold in 2023)



Click on the link to go to the location on the map:

<https://goo.gl/maps/aSTnh6FwR4AhWQDM7>



**Carplex** (Commercial)



### Location

Jeddah - Palestine Street - Al-Rehab

### Land area

13,963

### Built up area

14,079

### Commercial area

10,715

### Usage

Commercial - Workshops

### Status

Under construction




Click on the link to go to the location on the map:

<https://goo.gl/maps/ynfdyX15Bhvz3HQdA>


# Commercial building projects



 <b>مركز صاري</b> <b>SARI CENTER</b>	
Location	Sari Street - Al Faisaliah
Land area	14,387
Built up area	14,854
Commercial area	14,854
Usage	Main showroom
Year of completion	2022
Status	Completed (Under management)




<https://goo.gl/maps/xab3csx6EbVseywu5>

 <b>جواد سنتر</b> <b>Jawad Center</b>	
Location	King Fahd Road - Al Nuzha
Land area	16,870
Built up area	16,723
Commercial area	16,223
Usage	Commercial - office
Year of completion	2011
Status	Completed (Under management)



<https://goo.gl/maps/FsEL5vsyRA9ss9TU7>

  <b>سروان مول</b>	
Location	Jizan - Sabya
Land area	43,590
Built up area	26,096
Commercial area	18,781
Usage	Commercial
Year of completion	2010
Status	Completed (Under management)




<https://goo.gl/maps/jTbVWzqsApzrLiKZ8>

# Commercial building projects

	
Location	Prince Sultan Street - Al Salama
Land area	4,024
Built up area	3,600
Commercial area	3,600
Usage	Main showroom
Year of completion	2016
Status	Completed (Under management)



<https://goo.gl/maps/tFa3LMid2Nob1iwq7>

	
Location	Al Mahjar Street - Al Mahjar
Land area	16,595
Built up area	15,000
Commercial area	12,000
Usage	Commercial
Year of completion	2000
Status	Completed (sold in 2007)



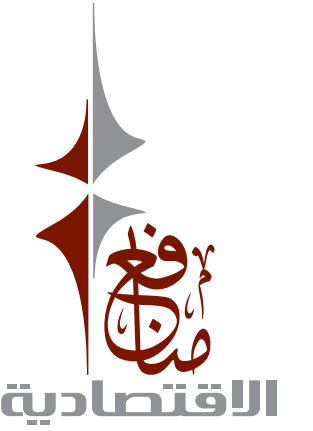
<https://goo.gl/maps/1YdNSjexTAKnFxrYA>

	
Location	Sari Street - Al Faisaliah
Land area	5,137
Built up area	4,096
Commercial area	2,795
Usage	Commercial
Year of completion	2022
Status	Under construction



<https://maps.app.goo.gl/nQEbdKBpcWVTbSJG6>

# Modern Stores (Logistical)



## Location

Jeddah - King Faisal Road - Al-Mahjar

## Land area

134,692

## Built up area

73,148

## Commercial area

71,147

## Usage

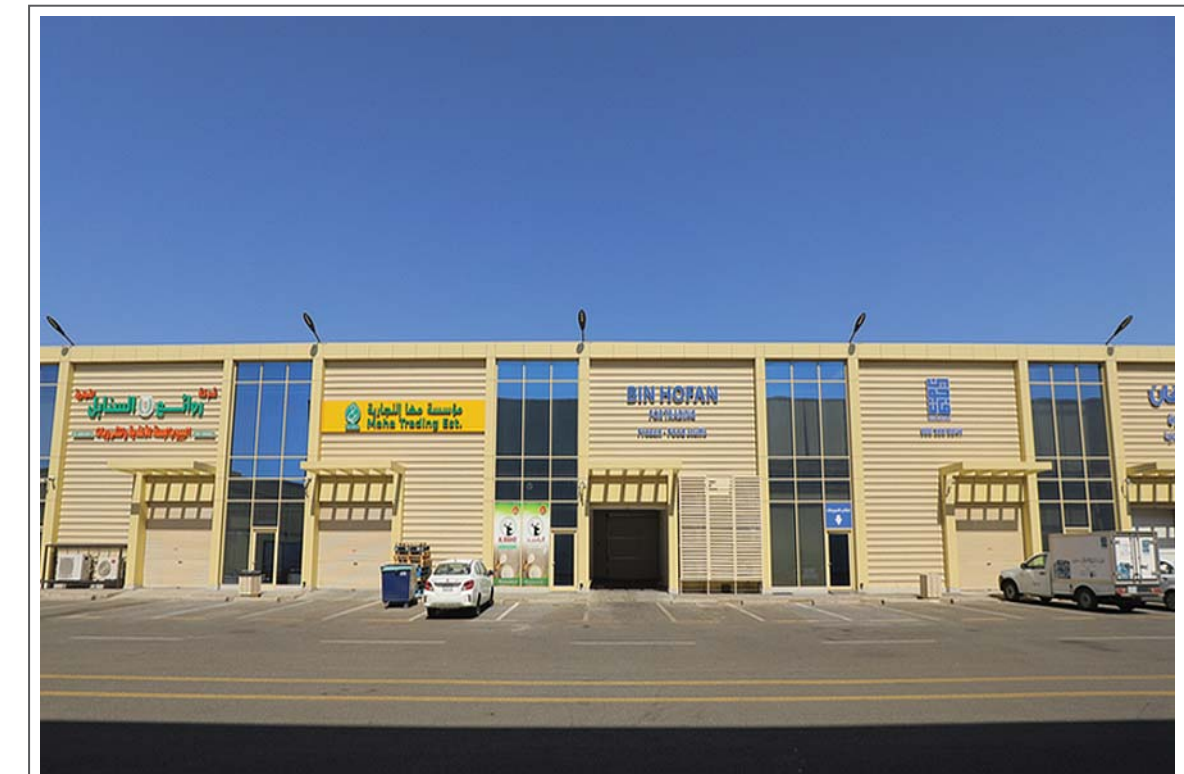
Warehouses - Offices - Shops

## Year of completion

2020

## Status

Completed (Under management)



Click on the link to go to the location on the map:

<https://goo.gl/maps/c9hQRcomovqKdggqA9>

# Silal Al-Madinah (Logistical)



## Location

Medina - King Khaled Road - Al-Aqoul

## Land area

250,490

## Built up area

137,100

## Commercial area

110,000

## Usage

Commercial - Warehouses  
Refrigerators

## Status

Licensing stage



Click on the link to go to the location on the map:

<https://maps.app.goo.gl/ezT2ZuMVkiXxDZ9m8>

# Logistics building projects



Location	King Faisal Road - Al Mahjar
Land area	52,994
Built up area	37,700
Commercial area	34,560
Usage	Warehouses - offices - shops
Year of completion	2012
Status	Completed (Under management)



<https://goo.gl/maps/5Z2E9JTntvzbV3p9>



Location	Al-Khamra Street - Al-Mahjar
Land area	40,000
Built up area	15,000
Commercial area	14,250
Usage	Warehouses - offices - shops
Year of completion	2011
Status	Complete (sold)

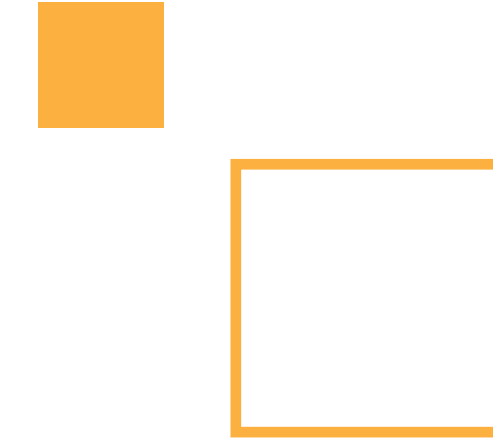


<https://goo.gl/maps/x3FB9ri6YFCocm5L8>

# Hotel and residential projects



# Land plans (Residential - Commercial - Logistical - Agricultural)







شركة منافع الاقتصادية للعقار  
Manaf'e Economic Co. for Real Estate

Integrated Real Estate Management Solutions

